

Detailed Travel Information

Conference Global Change and Resilience in Brno, CZ – May 22-24, 2013

For questions about travel contact: Eva Jurková +420 601 383 194

Transport to the Hotel from Main Train Station

1) BY CAR

The direction from Prague, Ostrava and from VIENNA highway D1, exit at EXIT 190 BRNO-ZÁPAD, farther streets Jihlavská and Chironova, follow the green navigation board. For more information about the route, please check the following link.

http://www.mapy.cz/#x=16.565341&y=49.185998&z=12&t=r&q=hotel%2520myslivna%2520brno&qp=10.347460_48.125305_20.609588_51.280989_6&rc=14.434141_50.083549_16.555518_49.187858&rl=obec%20Praha%2C%20okres%20Hlavn%C3%AD%20m%C4%9Bsto%20Praha%2C%20%20C4%8Cesk%C3%A1%20republika_Brno%2C%20okres%20Brno-m%C4%9Bsto&rp=%7B%22criterion%22%3A%22fast%22%7D&l=15

2) BY TRAM/BUS

-by tram no. 1 direction "Ečerova" (Travel by tram takes 5 minutes)

-tram stop „**Mendlovo náměstí**”

-by bus no. 52 direction „Kohoutovice, hájenka" (Travel by bus takes 10 minutes)

*(bus) timetable: Mendlovo náměstí → Myslivna

7:14, 8:20,10:41,12:41,14:42,16:42,16:56,18:43

-bus stop „**Myslivna**”

*(bus) timetable: Myslivna → Mendlovo náměstí

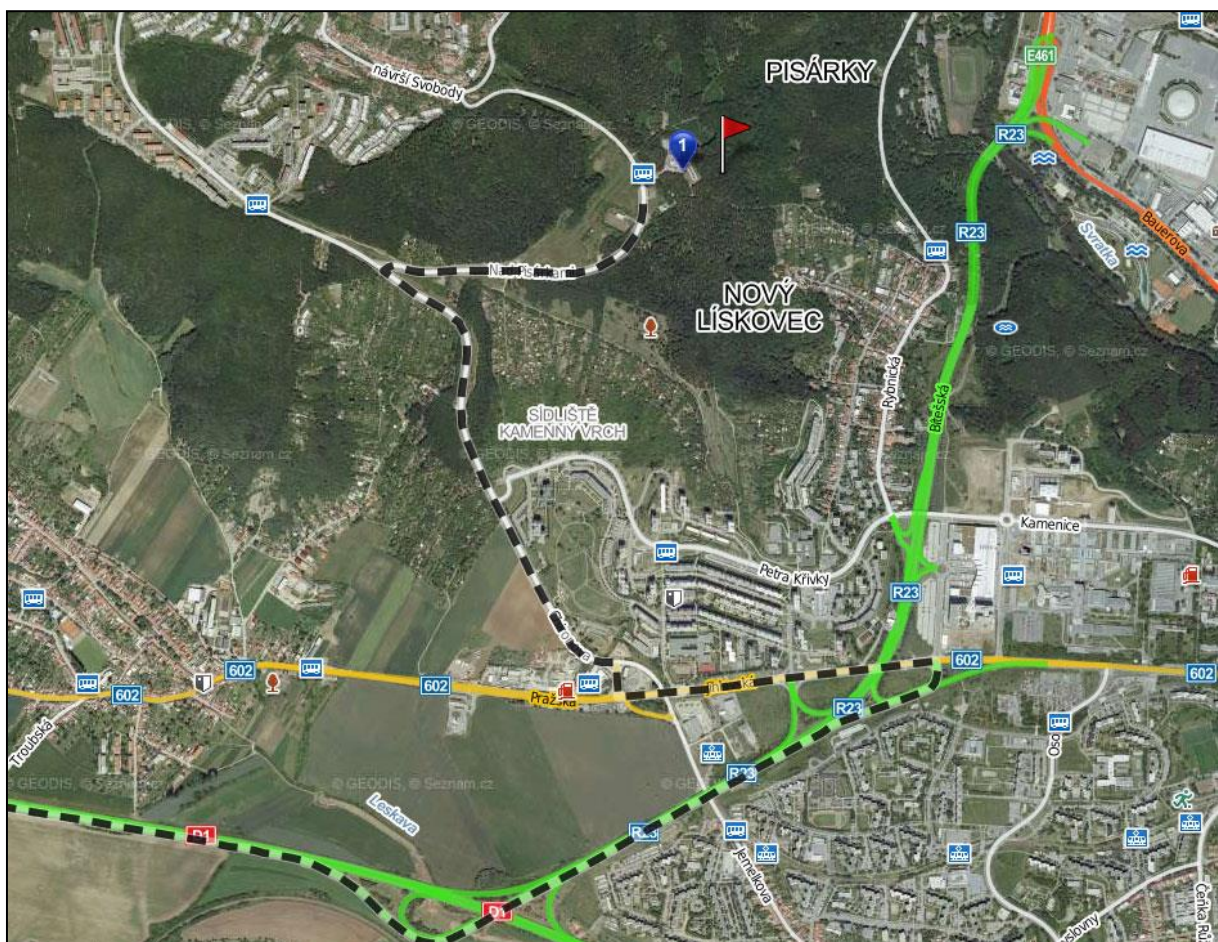
8:30, 11:06,13:06,15:16, 17:16,19:10,21:10,22:37,23:07

For more information about the route, please check the following link.

http://www.jrbrno.cz/L52_S1

Conference Global Change and Resilience is held in Brno, Nad Pisárkami 276/1, **HOTEL MYSLIVNA BRNO**, Czech Republic. For the exact location of the HOTEL MYSLIVNA (marked with a letter 1) in Brno, please, have a look at the enclosed map below.

Accommodation is arranged as single/double rooms. Single room has been already assigned on the basis of your name.



For more information about the hotel Myslivna, check the following link.

<http://www.hotelmyslivna.cz/an/>

For more information about current weather forecast concerning Brno, please check the following link.

<http://www.bbc.co.uk/weather/3078610>

For more information about Brno you could check the tourist guide that might be found on the following link.

<http://www2.brno.cz/index.php?lan=en&nav01=20608&nav02=20617>

This event takes place within the project:
Partnership in Climate Research and Adaptation Strategies
(Registration number CZ.1.07/2.4.00/31.0056)

The project is co-financed by the European Social Fund and the state budget of the Czech Republic.